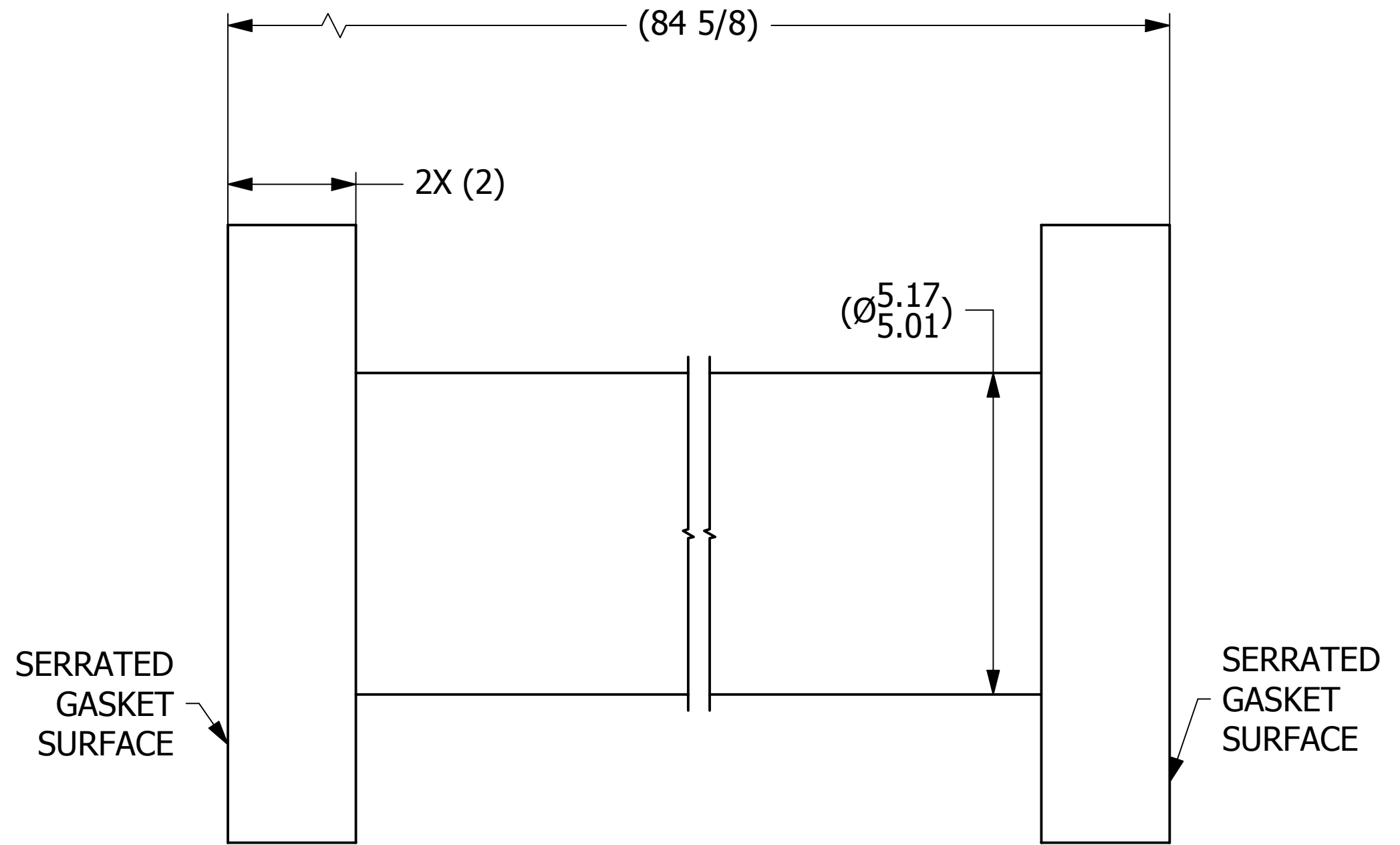
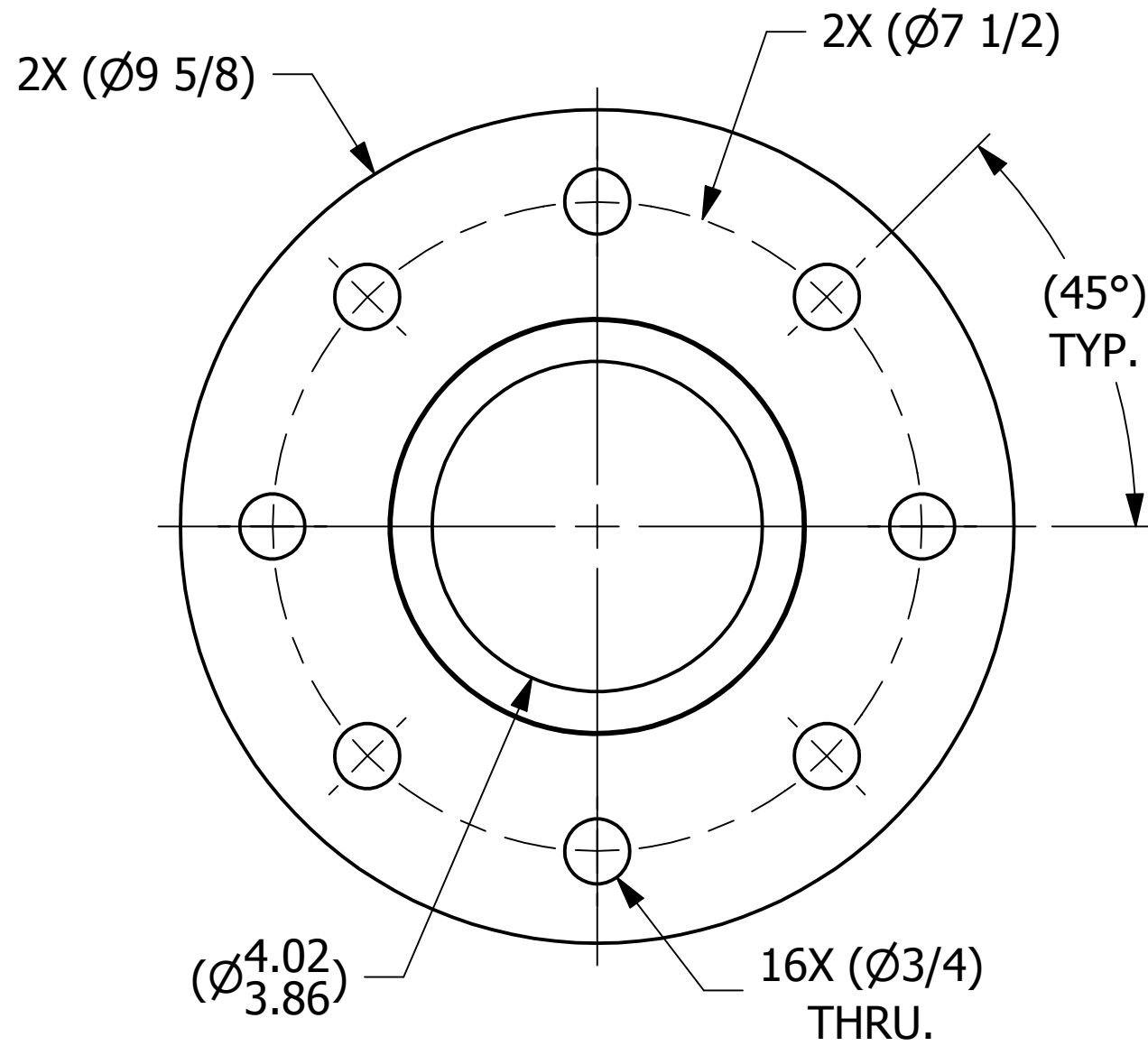
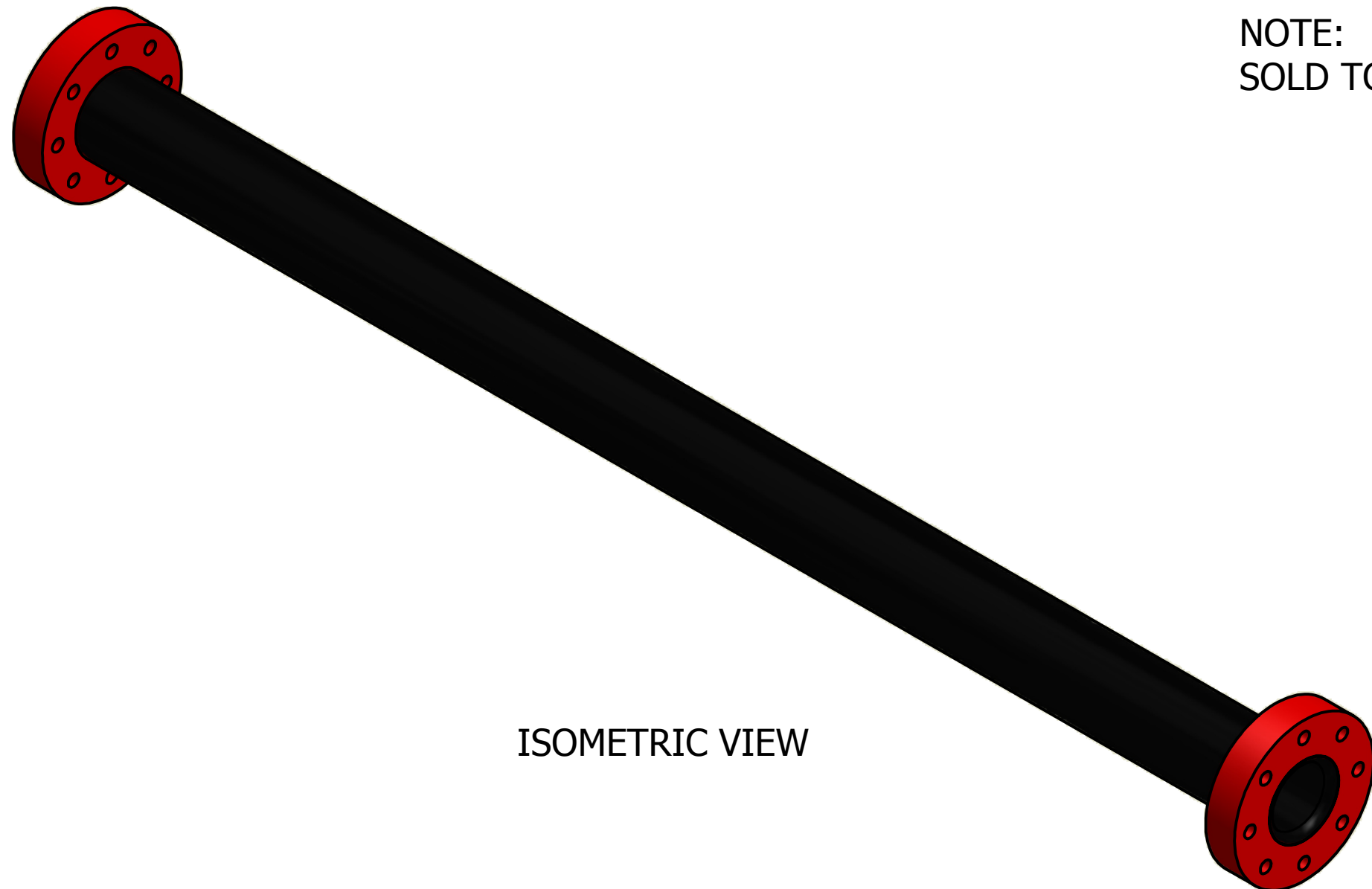


SALES DRAWING SALES DRAWING

SALES DRAWING SALES DRAWING



NOTE:  
SOLD TO WORLEY WELDING ONLY.



REV	BY	DATE	DESCRIPTION
C	TAK	8-31-17	ADDED DSS 3 NOTE, REPLACED QAP5F-1 W/ QAP5A-1
B	GDS	7-27-11	ADDED MARKING PRESSURE NOTE
A	REH	9-29-10	ADDED PART TO SYSTEM

<small>UNLESS OTHERWISE SPECIFIED DIMENSIONAL TOLERANCES FRACTIONAL: ±1/16 X.XX: ±.03 X.XXX: ±.015 ANGLE: ±1° DEBURR ALL SHARP EDGES. ALL MACHINED SURFACES TO HAVE A 125 RMS FINISH UNLESS NOTED OTHERWISE.</small>	DRAWN BY:	REH
	CHECKED BY:	VD
	PROTOTYPE BY:	REH
	PROTOTYPE DATE:	9/3/2010
	APPROVED FOR PRODUCTION BY:	VD
	PRODUCTION DATE:	9/29/2010

<b>SALCO PRODUCTS, INC.</b>		
PART NAME: <b>PIPE SPOOL 4"</b>		
MATERIAL: <b>SALCO PE</b>		
PROJECT #: <b>WAG0870</b>	SHEET #: <b>1 OF 1</b>	SCALE: <b>1:2</b>
DRAWING #: <b>C29387</b>	PART #: <b>HS4PS4585BK</b>	